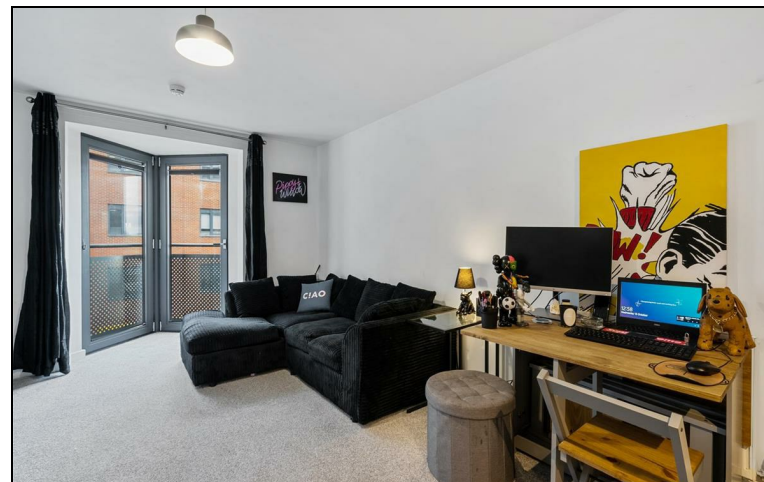


This floor plan is for representation purposes only and is not drawn to scale.
 The Gross Internal Area includes outbuildings shown on the plan.
 Whilst every attempt has been made to ensure the accuracy of the plan measurements of doors, windows and rooms are approximate only and should be checked before making any decisions reliant upon them.
 Copyright Bespokeplans.co.uk (ID805740)



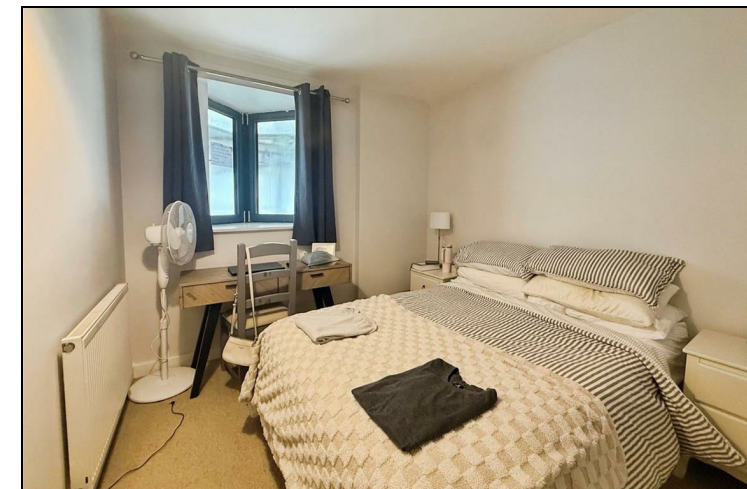
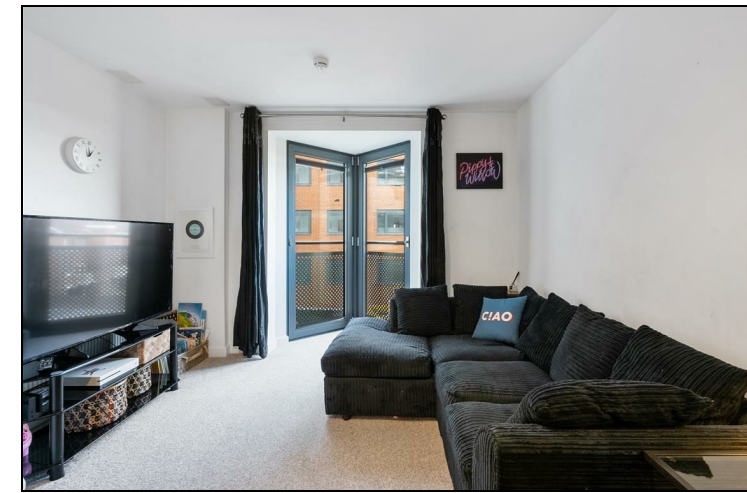
Energy Efficiency Rating		
	Current	Potential
Very energy efficient - lower running costs		
(92 plus) A		
(81-91) B		
(69-80) C		
(55-68) D		
(39-54) E		
(21-38) F		
(1-20) G		
Not energy efficient - higher running costs		
England & Wales	83	83
	EU Directive 2002/91/EC	



£1,750 Per Month:

Modern purpose built one bedroom apartment close to Wimbledon town centre & station

Modern and spacious one double bedroom third floor apartment located within moments of Central Wimbledon with an abundance of amenities close by, including excellent transport links, local shops and restaurants. The property benefits from having access to a secure bicycle storage lock up, a master bedroom with fitted wardrobes, spacious reception/dining room and modern bathroom. EPC band B. Council tax band C.



SPECIFICATION:

- Purpose Built Flat with Lift
- One Double Bedroom
- Open Plan Kitchen/Reception Room
- Secure Bicycle Storage
- Car Free Development
- First Months Rent in Advance
- Five Weeks Security Deposit
- Holding Deposit = One Weeks Rent
- EPC Band B
- Council Tax Band C

